

R8582313
R8582318

Shower table 3000 – Operation and maintenance manual

en



en The guarantee covers faults or defects in material or manufacture within a period of 3 years. Products are subject to minor technical modifications and design deviations. E. & O.E.

Content

Mounting instruction	3
Operational signage	3
Symbols used in this manual	4
Specific safety	4
General safety	5
Product label	6
Intended use	8
Intended operator profile	8
Intended user profile	8
Operating environment	8
Versions	9
Operating instructions	10
Height adjustment	12
Head support	13
Cleaning	14
To remove limescale	15
Disinfection	15
Maintenance	16
Service inspection	16
Service kit	18
Trouble-shooting	19
Technical data	20
Disposal and recycling	21

Mounting instruction

en



A mounting instruction is included with the product. It can also be downloaded from www.pressaliticare.com.

Operational signage



An operational signage is included with the product. It can also be downloaded from www.pressaliticare.com.

Original instructions

Symbols used in this manual

The following symbols are used in this manual as well as the associated documentation supplied with the product.



WARNING indicates a potentially hazardous situation which, if not avoided, could result in death or serious injury.



CAUTION indicates a potentially hazardous situation which, if not avoided, may result in minor or moderate injury. It may also be used to alert against unsafe practices.



IMPORTANT indicates important information about handling and use of the product.



NOTICE is used to address practices not related to personal safety.



Hand injury warning.



Electricity / voltage warning.



Non-ionizing radiation.
Electromagnetic compatibility warning.

Specific safety



- Never leave a person lying on the table without supervision.
- Always be careful when moving a person to and from the table.

General safety

WARNING

- Read and understand the manual completely before use. Keep the manual close to the unit.
- Comply with this manual to avoid accidents involving serious personal injury.
- Never use or handle this product in other ways than are specified in this manual, as this can put your safety at risk and cause damage to the product.
- Make sure that everyone who is to install or use the product and its systems has the necessary information and access to this manual.

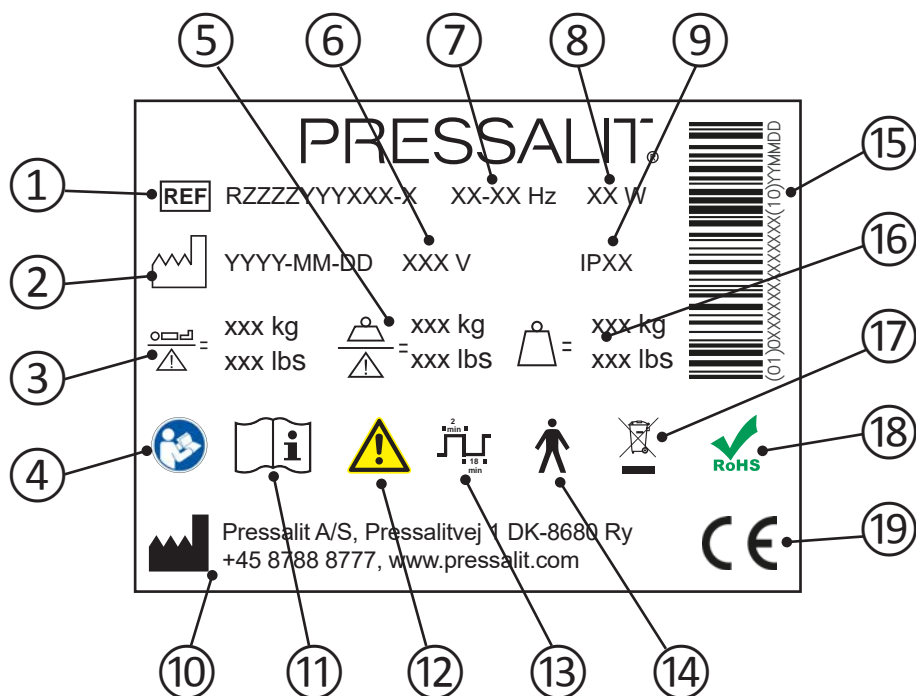
CAUTION

- Please comply with these instructions to avoid the product becoming damaged or destroyed.
- Do not perform repairs, disassembly, or assembly operations, extensions, re-adjustments or modifications to this product. These must be carried out by Pressalit or by persons authorized by Pressalit only.
- Never allow children to operate this product unless under supervision. The product is not intended for play.
- Never use the product if it is defective or damaged. Do not use a defective product before it has been repaired.

NOTICE

- The information in this manual is based on correct fitting of the product in accordance with our Assembly instruction.
- Pressalit cannot be held liable if the product is used in any way which differs from that described in the guide.
- We reserve the right to amend this manual without prior notice.

Product label

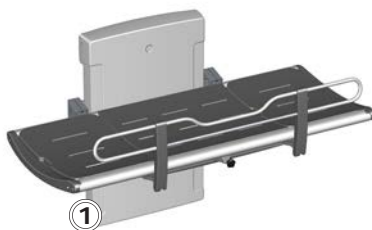


en

- ① Article number
- ② Production date
- ③ Maximum user weight
- ④ Consult manual for use
- ⑤ Safe working load
- ⑥ Mains voltage
- ⑦ Frequency

-
- ⑧ Maximum power consumption
-
- ⑨ IP class
-
- ⑩ Name and address of manufacturer
-
- ⑪ Consult manual for use
-
- ⑫ Consult the manual for important cautionary information such as warnings and precautions.
-
- ⑬ Duty cycle. The motor on height-adjustable products can be used for a maximum of 2 minutes of continuous operation, followed by 18 minutes pause.
-
- ⑭ Type B applied part Part of the product in normal use necessarily comes into physical contact with the patient to perform its function The product complies with requirements of IEC 60601-1 to provide protection against electric shock.
-
- ⑮ GS1-128 barcode
-
- ⑯ Product weight
-
- ⑰ Do not dispose as unsorted municipal waste. The product should be collected separately and returned to the designated recycling service.
-
- ⑱ This product does not contain any of the hazardous substances mentioned in the Council Directive 2011/65/EC on RoHS.
-
- ⑲ This product is CE-marked in accordance with the European Medical Device Directive 93/42/EEC, including amendments incorporated in Directive 2007/47/EEC. It also complies with all relevant requirements in the Council Directive 2006/42/EC (of 17 May 2006) on machinery and with Council Directive 2011/65/EC (of 8 June 2011) on RoHS. A declaration of conformity can be found at www.pressaliticare.com.

Product label placement ①.



Intended use

This product is intended for bathing a person who is unable to stand up or sit down. The person is lying horizontally on the table.

Intended operator profile

The product is to be used by personnel trained in health care and trained in washing a person in their care.

Intended user profile

The product can be used by all - adults, children, young, old, whose weight does not exceed the **maximum load of 200 kg**.

Operating environment

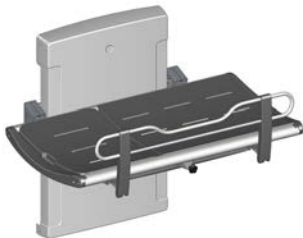
For indoor use in a wet environment, such as a bathroom or wash room. The product is intended to be used at room temperature, in a stand-alone environment, in private homes, nursing homes and hospitals under normal working conditions.

NOTICE

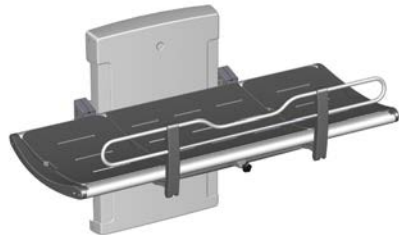
If the product is installed in an atmosphere heavy in salt or chloride, the warranty of the shower table will be reduced from the normal 3 years to 1 year.

Salt and chloride have a corrosive effect on the products components and will cause a decrease in the life expectancy of the product. The damaging effects can, however, be reduced if the product is showered with tap water on a daily basis.




Versions



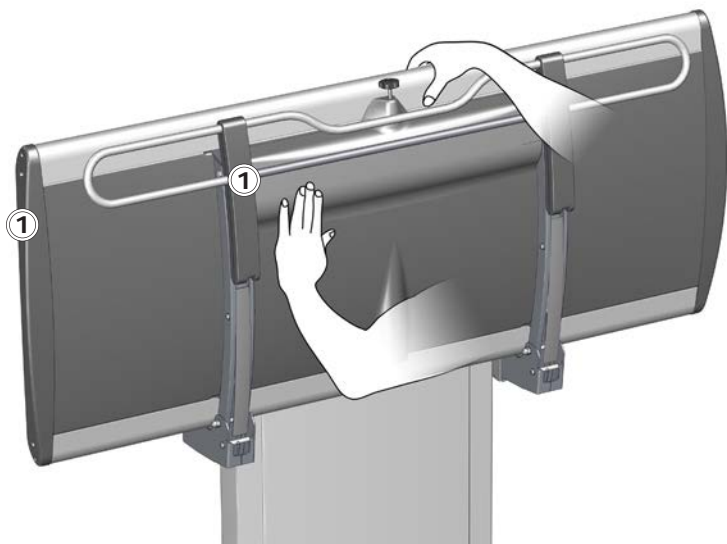
R8572313 - R8582313 - R8592313



R8572318 - 8582318 - R8592318

Version	Power plug type
R8582313 (Standard) R8582318 (Standard) Standard 230V	
R8592313 (US) R8592318 (US) 120V	
R8572313 (AUS) R8572318 (AUS) 230V	

Operating instructions



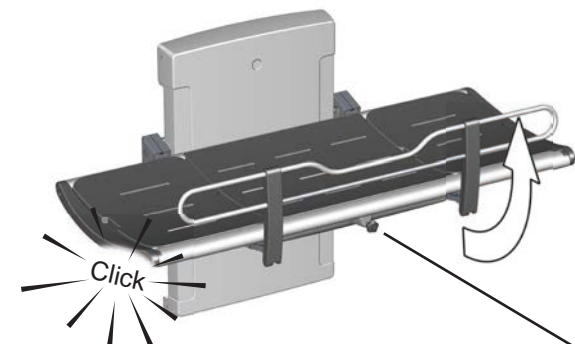
Support the table using your hand or body when folding it up and down, to avoid the risk of damage.

en

The built-in gas cylinders make it easy to fold the table up against the wall after use.



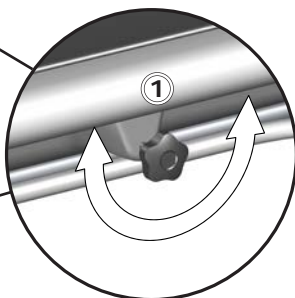
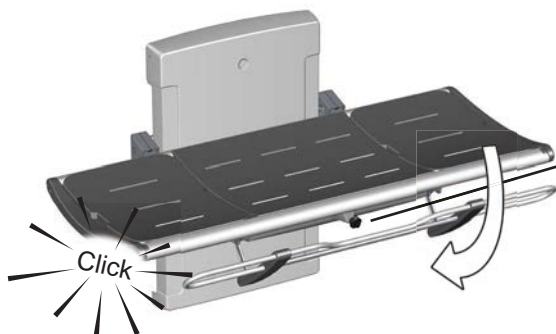
Take care to avoid injury to hands when in the vicinity of closing mechanical parts ①.



To pull the safety rail up:

Turn the locking knob ①
Turn the knob one way or another to release the safety rail.

Lift the safety rail upwards until you hear a click indicating that it is locked.



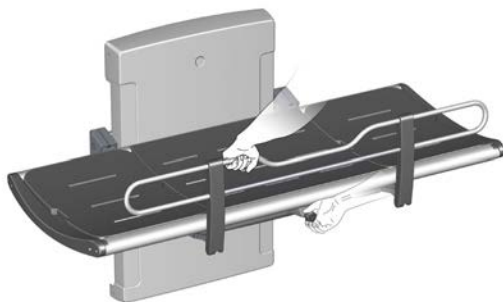
To fold the safety rail away:

Turn the locking knob ① Turn the knob one way or another to release the safety rail. Push the safety rail back to the underside of the table until you hear a click indicating that it is locked.

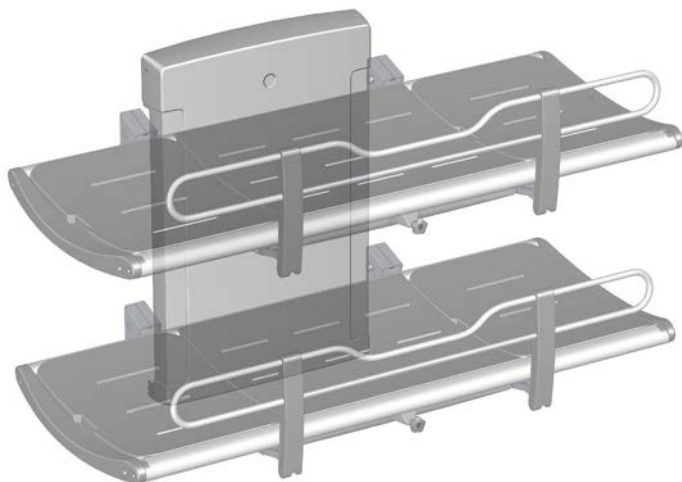
en

NOTICE

If the locks does not release when turning the release knob, gently lift the rail, to take the weight off the locking mechanism. This will ensure the release of the locks.



Height adjustment



When the table is installed at the correct height (recommended installation height is 868 mm above the floor), it can be adjusted between 300 and 1000 mm above the floor.

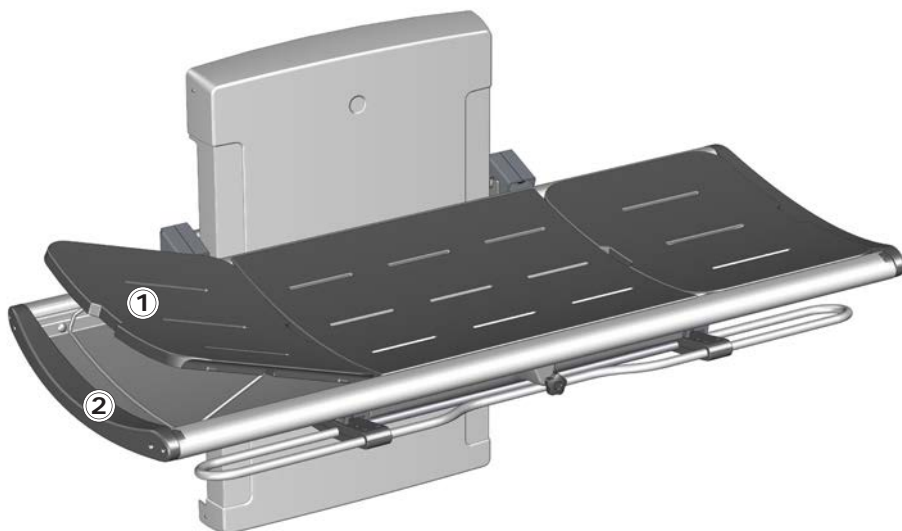
The height adjustment is controlled by the wired remote control unit.

Press and hold the Up button to raise the table, and press and hold the Down button to lower the table.



Make sure that there are no objects under the shower table when adjusting the height.

Head support



The end pad can be used as a head support for increased comfort. Use the cut-out grip ① to lift the pad. Fold the metal bracket down ② to hold the pad in the upright position.

The end pads are interchangeable and can be placed at either end of the table.

en

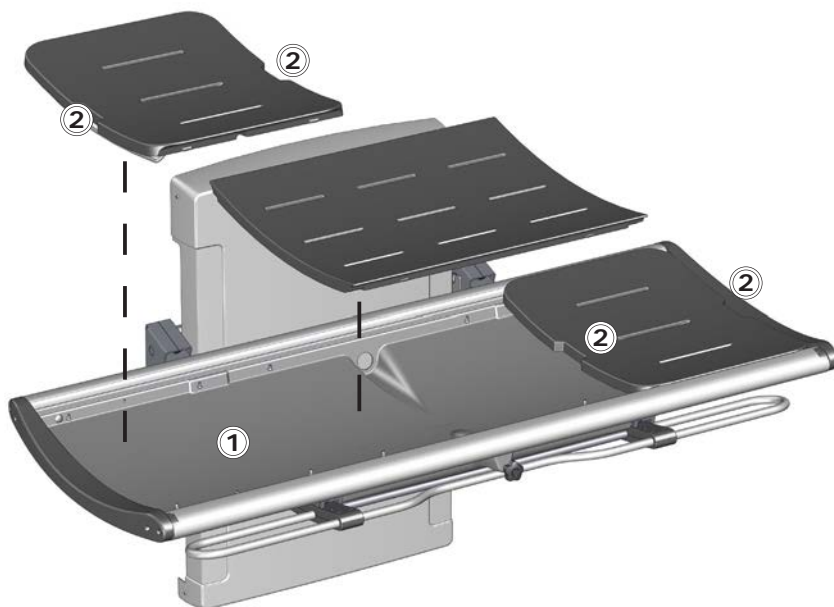


CAUTION

Never let a person lie on the shower table without the pads in place. The tray under the pads is for water collection only. It is not to be used as a bathtub. Risk of user injury and damage to product.

Cleaning

Clean the shower table after each use. Use ordinary soapy water. Rinse off with fresh water and dry with a soft cloth.



Do not leave the pads soaked in water. Remove the pads and dry the water collection tray ①. Use the cut-out grips ② when lifting the pads.

IMPORTANT

- Do not use an autoclave or other type of steam cleaner.
- Avoid aggressive cleaning agents containing acids or chloride.
- Never spray the shower table directly with a high pressure cleaner.
- Avoid use of aggressive, abrasive, corrosive or chloride-based cleaning or disinfecting products.

To remove limescale

To remove limescale marks on the aluminium parts, use 3 parts 30% household vinegar to 7 parts water and afterwards wipe the parts with a cloth wrung out in clean water.

In countries with relatively high levels of lime in the water supply, it may be necessary to remove limescale deposits from the aluminium parts using a de-scaling agent such as acetic acid. Test this first on an area that is not visible when the table is in use.

Disinfection

When using the shower table for multiple patients, it is necessary to both clean and disinfect the shower table between uses on different patients to prevent the risk of cross infection.



Always read the material safety data sheet (MSDS) and supplied instructions of the cleaning, disinfecting or de-scaling agent and comply with instructions for safe use, dilution, rinsing, drying, handling and storage of the agent.

en

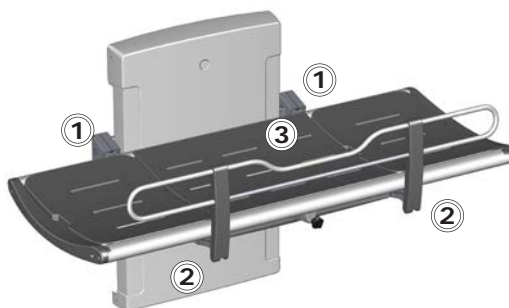
Maintenance

Expected service life of the shower table is 10 years for institutional use, provided that maintenance is carried out as described below:

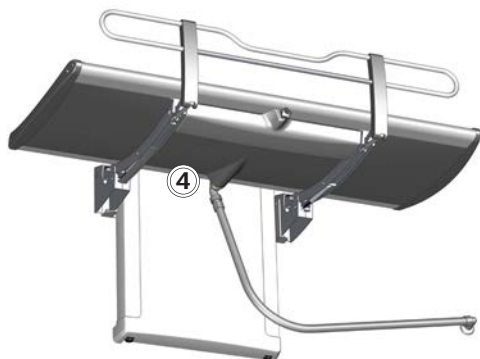
It is recommended on a weekly basis to run the motors on the product to their maximum positions by raising the product to its full height, and then lowering it to its lowest position, so that the internal parts are lubricated.

It is recommended that service inspection is done one a year.

Service inspection



- Check the hinges ① on the table and the safety rail ②. Tighten if necessary.
- Check the pads ③ for damage and replace if necessary.

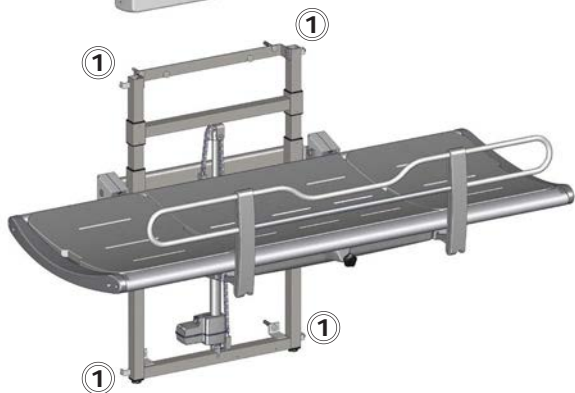


- Check the drain pipe connections ④, and check and clean the water trap (if fitted).



Disconnect mains before removing the covers.

Remove the upper and lower retaining screws ① on the lift unit cover and carefully remove the cover.

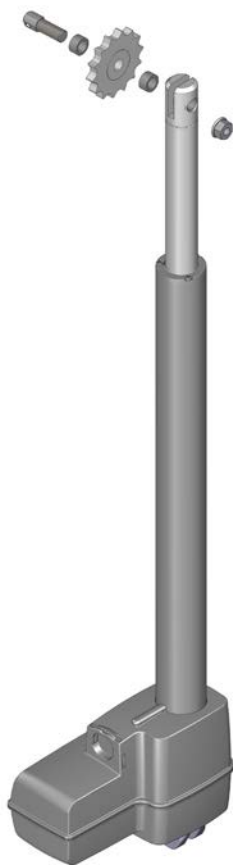


- Check the mount screws ② and tighten if necessary.
- Oil moving parts with Berulub, especially the sliding brackets ③.
- Check all electrical connections to the motor ④.
- Check the chain wheel ⑤ for wear.
- Oil the chain ⑥.
- Put the unit cover back again and tighten the retaining screws.

en

Service kit

Expected service life of the shower table is 10 years for institutional use. However it must be expected that some of the internal wear and tear parts must be replaced after approximately 3 years.

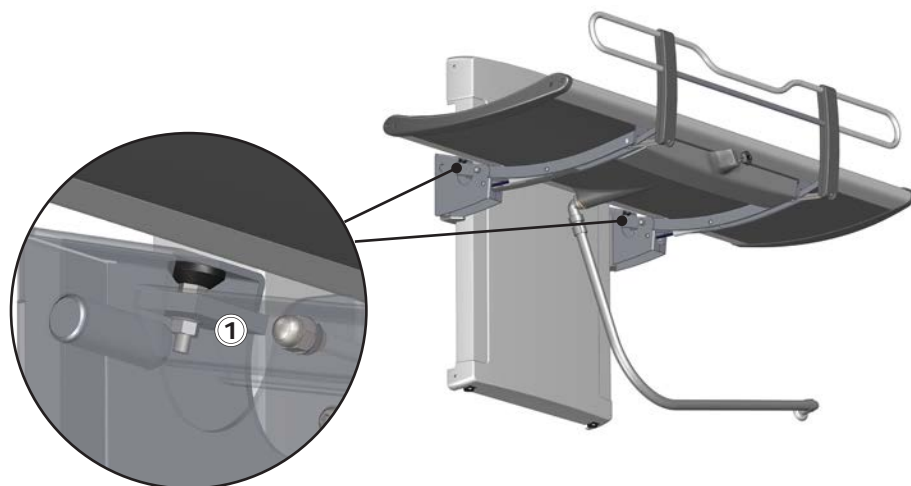


en

The service kit T5256 with the replacement parts must be purchased at Pressalit A/S or your local dealer.

Trouble-shooting

Symptom	Cause	Action
The shower table does not stay in upright position.	One or more gas cylinders are defective.	Contact Pressalit A/S or your local dealer.
The product will not work, even though the remote control is used correctly.	Fault in power supply.	Check that all wires and plugs are intact and correctly connected. Contact Pressalit A/S or your local dealer.
The water does not run out of the water collection tray.	Adjustment screws too high or too low.	Adjust the adjustment screws ①.
The shower table runs up and down unevenly.	The sliding brackets are not properly lubricated.	Oil the sliding brackets as described under “Maintenance”.



Contact Pressalit Care or your dealer if the problem cannot be remedied. Do not attempt to repair the product yourself, as this will invalidate the guarantee.

Technical data

Max load	200 kg / 441 lbs
Materials	Powder-laquered stainless steel Aluminium Plastics Mattress surface: Polyurethane foam
Dimensions (width x length)	R8572313/R8582313/R8592313: 987 mm x 1410 mm / 38.85 x 55.51 inches
	R8572318/R8582318/R8592318: 987 mm x 1910 mm / 38.85 x 75.19 inches
Weight	R8572313/R8582313/R8592313: 77,60 kg / 171,07 lbs
	R8572318/R8582318/R8592318: 82,35 kg / 181,55 lbs

Power specifications	
Max consumption	70 W
Voltage	Mains connection: 230V/120V/100V
Frequency	50/60 Hz
Current	3.7 A

en

Disposal and recycling

The unit contains reusable materials. There are no known hazards or risks associated with disposal of the product. All components can be discarded after having been cleaned and disinfected.

When disposing of the product, we recommend that it be disassembled and broken down into different waste groups for recycling or combustion.

The following table provides information on the recycling and handling of the product.

Recyclable components	Material
Aluminium	Aluminium is theoretically 100% recyclable without any loss of its natural qualities. It requires only 5% of the energy used to produce primary aluminium. The quality of recycled aluminium is so high that it can be used again and again, even in the case of anodised products as the anodised layer is a natural part of the aluminium.
Steel	Steel can be recycled by being re-melted and included as a secondary material in the production of new steel.
PVC and polystyrene	Hard PVC is granulated and re-melted. Use plastic sorting and recycling systems where they are locally available, otherwise incinerating plastic has the added benefit of generating energy, which can be used for, for example, combined heat and power production.
Polyurethane	Like other plastics, polyurethane can be recycled in two primary ways: mechanical recycling, in which the material is reused in its polymer form, and chemical recycling that takes the material back to its various chemical constituents.
Electronics	The electronic components should be collected separately and returned to the designated recycling service.

en