

Push your  
boundaries



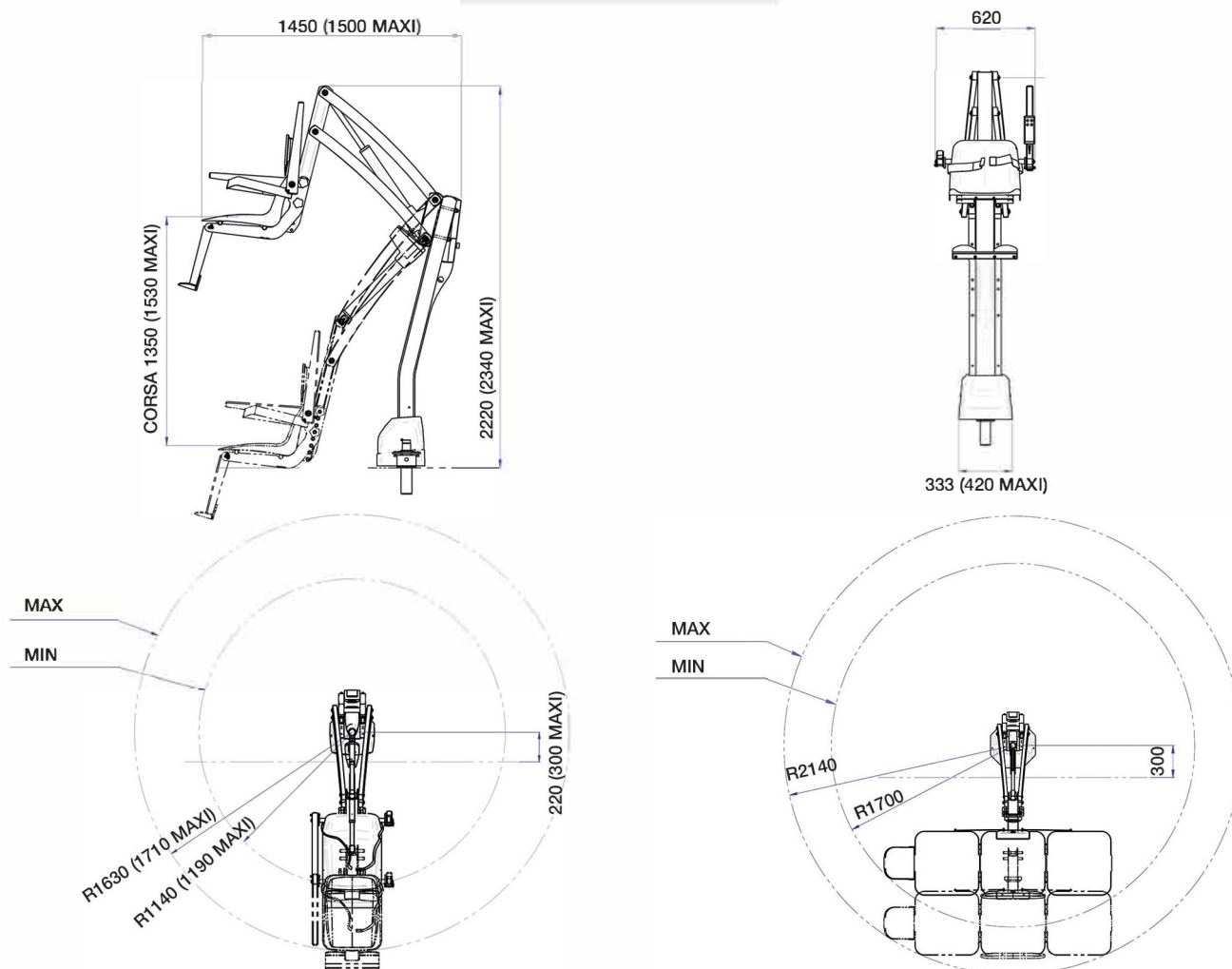
## **i-swim3 – the innovative pool lift, adaptable to your needs**

The unique movable arms system provides multiple configurations and great flexibility. I-swim3 is the smart solution for a wide range of pool decks, wellness and rehabilitation centers.

i-swim 3 is available in 2 different sizes: STANDARD with 180 kg lifting capacity, or MAXI with extended arms and 250 kg capacity.

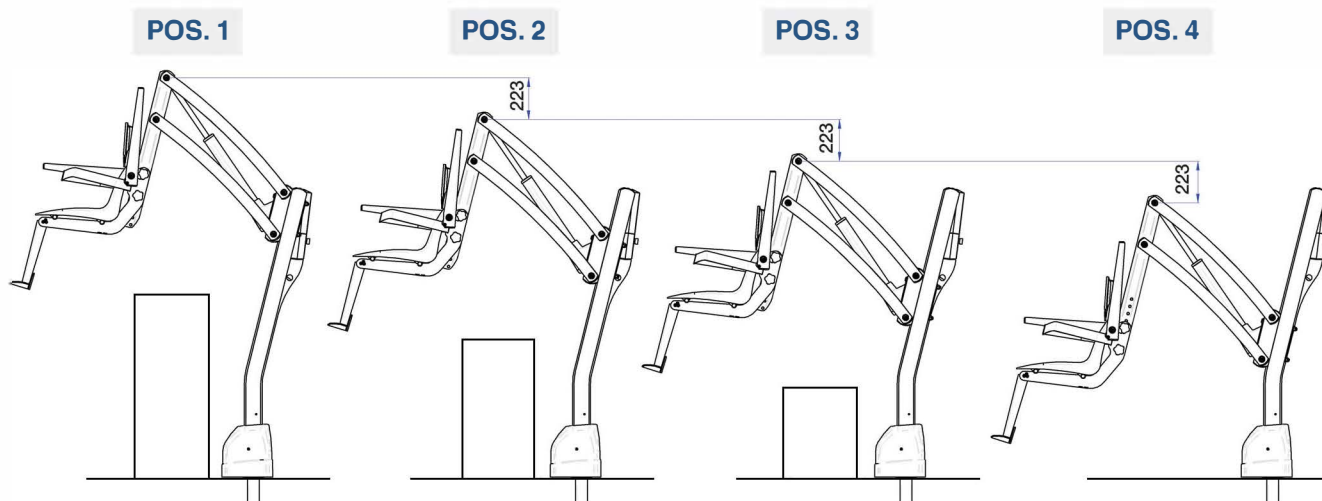
The lift can be equipped with a fix seat, movable seat or with a stretcher as well.

## Dimensions



## Configurations

The arms can be set in 4 different positions to configure the device for different pool decks.

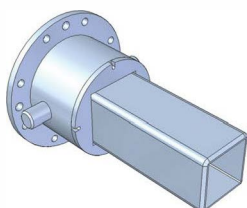


## Lift Models

| Model       | Description                 | Lifting Capacity | Max Travel |
|-------------|-----------------------------|------------------|------------|
| W8022001-01 | STD - 180 KG - FIX SEAT     | 180 kg           | 1350 mm    |
| W8022001-02 | STD - 180 KG - MOBILE SEAT  | 180 kg           | 1350 mm    |
| W8022001-03 | STD - 180 KG - STRETCHER    | 180 kg           | 1350 mm    |
| W8022002-01 | MAXI - 250 KG - FIX SEAT    | 250 kg           | 1530 mm    |
| W8022002-02 | MAXI - 250 KG - MOBILE SEAT | 250 kg           | 1530 mm    |
| W8022002-03 | MAXI - 250 KG - STRETCHER   | 250 kg           | 1530 mm    |

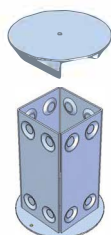
The lift fixation kit has to be ordered separately and customer can choose between a square foot or a round foot. The i-swim3 maxi is available only with square foot.

SQUARE FOOT



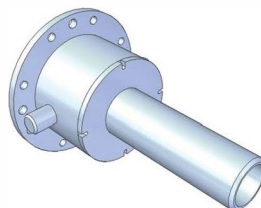
W8021000  
W8022157 (MAXI)

SQUARE FOOT ANCHORE



W8022140  
W8022140 (MAXI)

ROUND FOOT



W8022140

ROUND FOOT ANCHORE



W8022165

## Water access

In addition to the chosen lift Model the customer can order separately a different seat model or the stretcher. Thereby the same lift can be quickly configured for different needs.

FIX SEAT



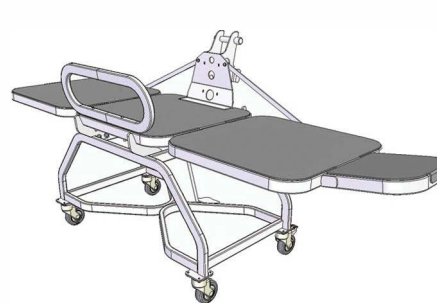
Part W8022531

MOBILE SEAT



Part W8022520

STRETCHER



Part W8022540

## Parts and accessories

Lift carrier W8020536  
Lift cover W8020537

Stability belt W8020538  
Additional battery W8020539





#### GENERAL TECHNICAL DATAS

|                  |                            |
|------------------|----------------------------|
| Structure        | Aluminum / Stainless Steel |
| Rotation         | 360°                       |
| Coating          | Powder Coating             |
| Lifting capacity | 180 kg / 250 kg MAXI       |
| Tension          | 24V                        |
| Battery charger  | included                   |
| Battery duration | 50 cycles                  |
| Controls         | 4 buttons Pendant Switch   |
|                  | Emergency stop             |
|                  | Battery load indicator     |

#### I-Swim complies the following regulations:

Directive 2006/42/CE  
Directive 2004/108/EC  
UNI EN ISO 10535  
93/42/CEE

Machine Directive  
EMC Electromagnetic Compatibility  
Hoist For The Transfer of Disabled Persons  
Medical Device Directive