

# Theia and Eros

A new approach to dynamic pressure area care

Flexibility of being able to 'step up' or 'step down' the surface to meet clinical needs



Theia - Digital Pump (left)  
Eros - Dial Pump (right)

Delivers cost benefits without compromising on clinical outcomes

The Theia and Eros dynamic pressure area care family have been developed with flexibility and choice in mind; providing multiple system combinations to meet clinical needs. Moving away from a traditional dedicated pump and dynamic mattress system; Drive DeVilbiss Healthcare have developed mattress and cushion options that are compatible with both the Theia Digital and Eros Dial pumps.



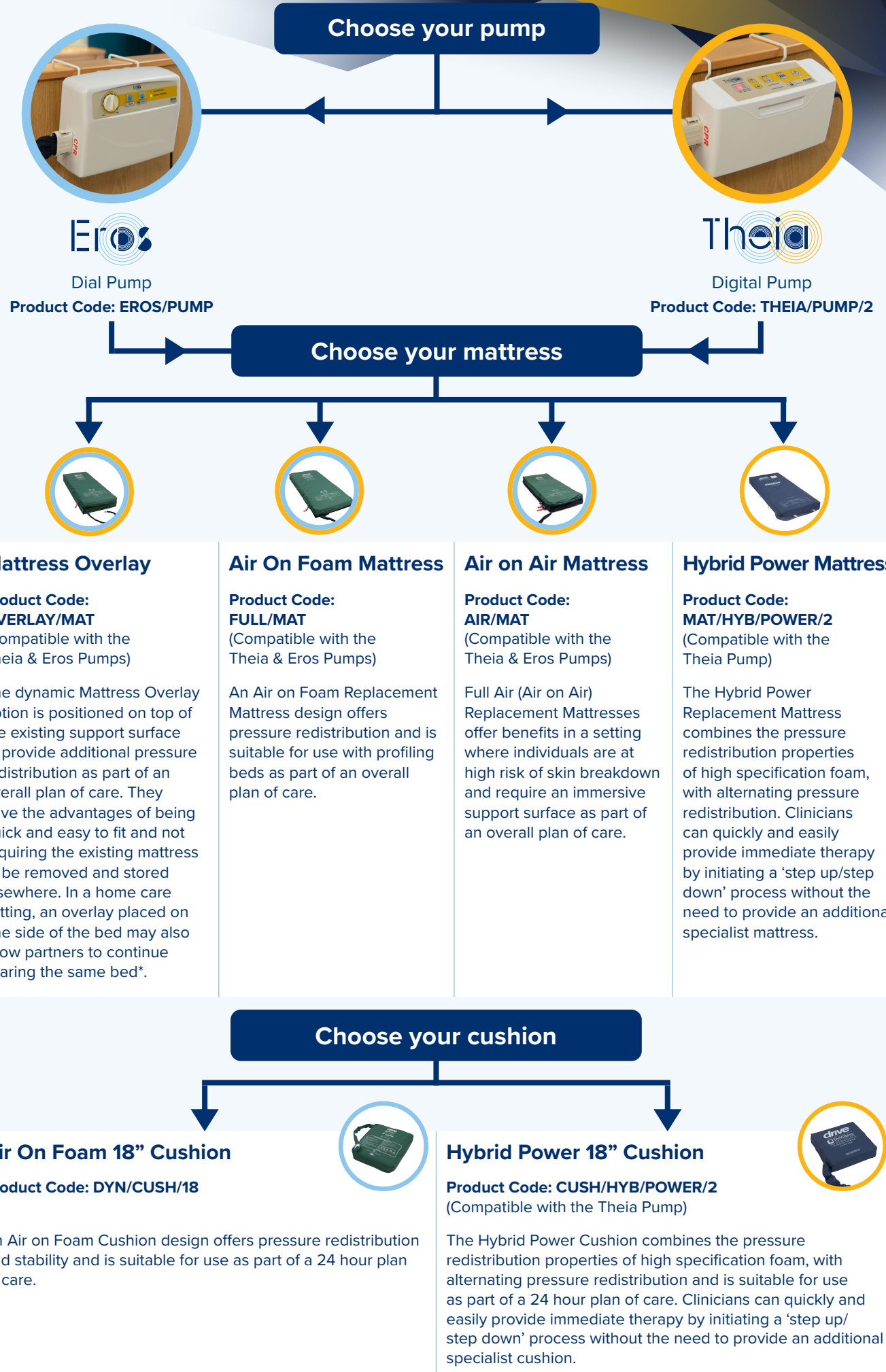
Choice and Flexibility

With two pumps to choose from; the Theia Digital Pump or Eros Dial Pump enable users to choose the control unit based on user preference or cost constraints. The mattress options can be stepped up or down to meet changing clinical needs, simply change the surface and keep the same pump. A compatible Air on Foam Cushion is also available as part of a 24 hour plan of care.

“Equipment from different manufacturers, or even different models from the same manufacturer, may have different controls, display functions and modes of operation. This can make it more likely for errors to occur due to unfamiliarity with the design or method of use”  
- Care Quality Commission 2011.

This interchangeable system reduces clinical training on multiple dedicated pumps and dynamic systems, whilst also reducing risks associated with medical devices in use due to standardised training and competency programs. It is widely acknowledged that standardisation of equipment and the implementation of a standard competency-based training program helps to minimise errors and increase patient safety<sup>1</sup>.

The pumps and surfaces all share a number of common component and spare parts delivering cost savings whilst reducing the number of critical spare part stockholding. This contributes greatly to reducing the cost of ownership whilst simplifying in field service with reduced product downtime. Service support staff only have to carry minimal spare parts or one type of replacement pump to solve problems in the field; this greatly improves customer service, minimises client inconvenience and reduces down time of critical pressure support equipment.



<sup>1</sup> www.cqc.org.uk Supporting Note: Standardisation 2011 (published 6th May 2011)

\*For use on a double bed - an individual risk assessment must be carried out to ascertain that the securing straps are not required for patient safety.



Features and Benefits:

Eros Dial Pump

- Offering 2:1 alternating therapy
- Static Mode
- Comfort controls using the dial
- Audible and visual alarms for low pressure
- Alarm mute button
- Integral hanging hooks on pump to enable it to be suspended from the bed footboard
- Fully EN60601-1, EN60601-1-2 and EN60601-1-11 compliant; meeting the requirements for medical electrical equipment and medical electrical systems used in the home healthcare environment

Theia Digital Pump

- Offering 2:1 alternating therapy
- Static Mode
- Comfort controls
- Audible and visual alarms for power failure or low pressure
- Alarm mute button
- Auto lockout - the pump will lockout after 5 minutes of inactivity to prevent accidental setting changes
- Integral hanging hooks on pump to enable it to be suspended from the bed footboard
- Fully EN60601-1, EN60601-1-2 and EN60601-1-11 compliant; meeting the requirements for medical electrical equipment and medical electrical systems used in the home healthcare environment

Fully compliant with the requirements for medical electrical equipment and medical electrical systems used in the home healthcare environment standards EN60601-1-11.



Easy to use comfort controls



Surface Features

- Top covers are multi-stretch, water resistant and vapour permeable. The seams are welded to help prevent fluid ingress
- The cover includes a white inner substrate to assist with identifying strike-through and cover damage
- Ultra-Fresh™ anti-microbial, is fully encapsulated in the cover to help control microbial deterioration and to help extend the life of the covers, contributing to a reduction in cost of ownership and improved product longevity
- Includes a transport mode for up to 8 hours to ensure that the support surface provides pressure redistribution in power outages or when transport is required
- CPR pull tags are available at the foot end of the mattresses for rapid deflation in an emergency. The Overlay and Air on Foam mattresses have one tag, and the Air on Air mattress features two CPR tags.

\*Ultra-Fresh is a trademark of Thomson Research Associates, Inc.

Mattresses

- **OVERLAY/MAT** (Mattress Overlay)  
Max User Weight 180kg (28st)
- **FULL/MAT** (Air on Foam Mattress)  
Max User Weight 180kg (28st)
- **AIR/MAT** (Air on Air Mattress)  
Max User Weight 200kg (31.5st)
- **MAT/HYB/POWER/2** (Hybrid Power Mattress)  
Max User Weight 254kg (40st)\*\*

\*\*Note: When not in use with the Theia Pump the Hybrid Mattress is suitable for patients up to 226kg (35.5st)

Cushions

- **DYN/CUSH/18** (Air on Foam 18" Cushion)  
Max User Weight 120kg (18st)
- **CUSH/HYB/POWER/2** (Hybrid Power 18" Cushion)  
Max User Weight 190kg (30st)\*\*\*

\*\*\*Note: When not in use with the Theia Pump the Hybrid Cushion is suitable for patients up to 170kg (26.5st)





Theia

Eros

## Pump Specifications

### Eros

Product Code: **EROS/PUMP**  
Pump Type: **Dial**  
Dimensions (L x W x D): **28 x 20 x 10cm**  
Pump Weight: **2.2kg**  
Modes & Settings: **Alternating Mode, Static Mode, Comfort/Pressure Setting**  
Alternating Therapy: **2:1 (AB Pattern)**  
Cycle Time: **12 mins**

### Theia

Product Code: **THEIA/PUMP/2**  
Pump Type: **Digital**  
Dimensions (L x W x D): **27 x 15.5 x 10cm**  
Pump Weight: **1.6kg**  
Modes & Settings: **Alternating Mode, Static Mode, Comfort/Pressure Setting**  
Alternating Therapy: **2:1 (AB Pattern)**  
Cycle Time: **10 mins**

## Mattress Specifications

### Overlay Mattress

Product Code: **OVERLAY/MAT**  
Dimensions (L x W x D): **203 x 90 x 12.7cm**  
Max User Weight: **180kg (28st)**  
Mattress Weight: **4.2kg**  
No. of Cells: **17 individual cell on cell function (3 static head cells / 14 alternating cells)**

### Air on Air Mattress

Product Code: **AIR/MAT**  
Dimensions (L x W x D): **203 x 90 x 20cm**  
Max User Weight: **200kg (31.5st)**  
Mattress Weight: **7.3kg**  
No. of Cells: **Base Cells: 20 static cells  
Top Cells: 3 static head cells + 17 alternating body cells**

### Air on Foam Mattress

Product Code: **FULL/MAT**  
Dimensions (L x W x D): **203 x 90 x 17.7cm**  
Max User Weight: **180kg (28st)**  
Mattress Weight: **9.7kg**  
No. of Cells: **17 individual cell on foam function (3 static head cells / 14 alternating cells)**

### Hybrid Power Mattress

Product Code: **MAT/HYB/POWER/2**  
Dimensions (L x W x D): **198 x 88 x 16cm**  
Max User Weight: **254kg (40st)\***  
Mattress Weight: **16kg**  
No. of Cells: **14 alternating cells: 10 body cells / 4 foot cells (+ static foam head section)**  
**\*Note:** When not in use with the Theia Pump the Hybrid Mattress is suitable for patients up to 226kg (35.5st)

## Cushion Specifications

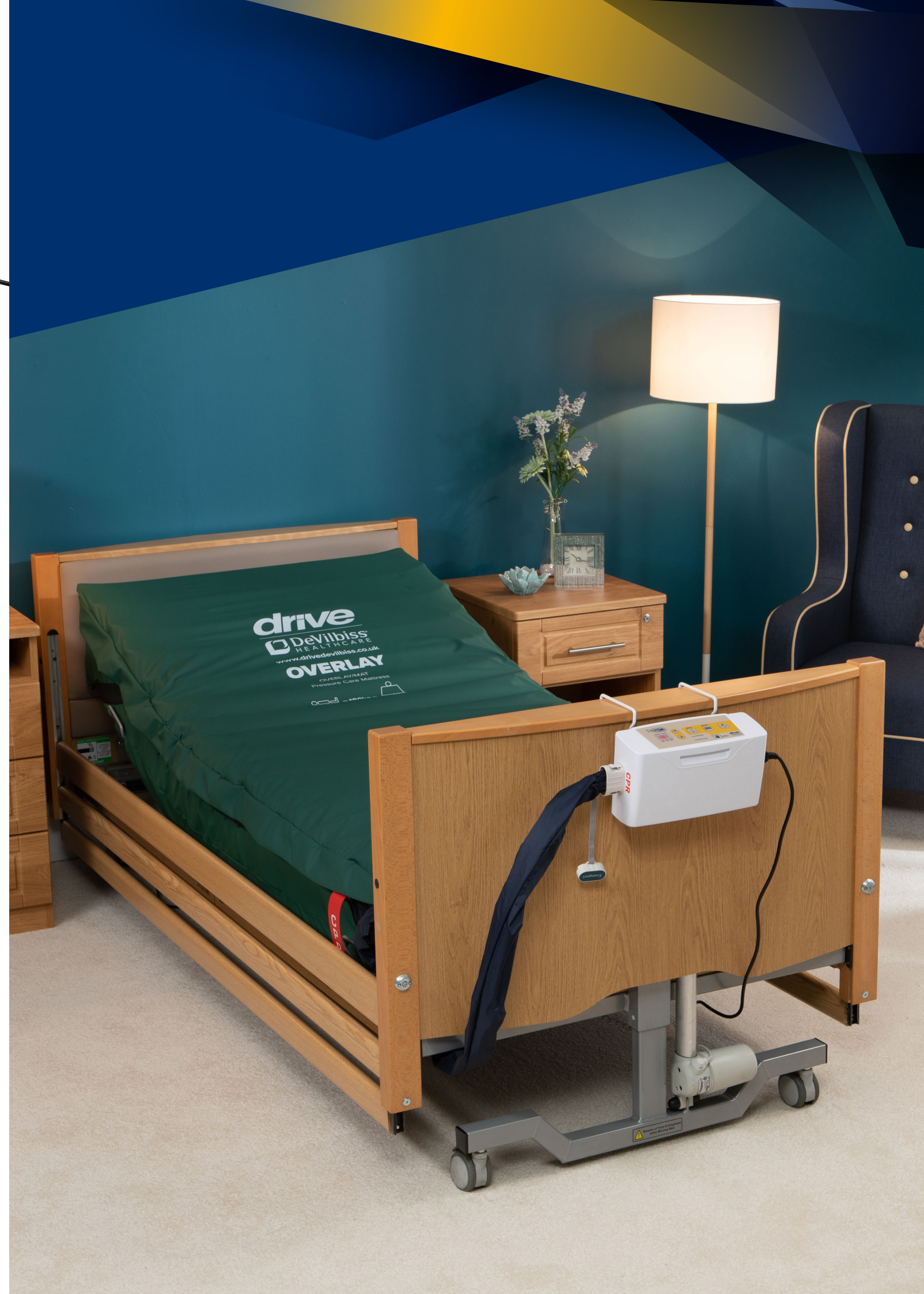
### Air on Foam 18" Cushion

Product Code: **DYN/CUSH/18**  
Dimensions (L x W x D): **50 x 45 x 10cm**  
Max User Weight: **120kg (18st)**  
Cushion Weight: **2kg**  
No. of Cells: **6 alternating cells**

### Hybrid Power 18" Cushion

Product Code: **CUSH/HYB/POWER/2**  
Dimensions (L x W x D): **45 x 45 x 10cm**  
Max User Weight: **190kg (30st)\*\***  
Cushion Weight: **2kg**  
No. of Cells: **4 foam filled alternating cells**

**\*\*Note:** When not in use with the Theia Pump the Hybrid Cushion is suitable for patients up to 170kg (26.5st)





***drive***



[www.drivedevilbiss.co.uk](http://www.drivedevilbiss.co.uk)

Drive DeVilbiss Healthcare Ltd.  
Sidhil Business Park, Holmfield, Halifax, West Yorkshire HX2 9TN

**[info@drivedevilbiss.co.uk](mailto:info@drivedevilbiss.co.uk)**  
**0845 0600 333**

**Leaflet Code: LL486**

All sizes and weights stated are nominal. All errors and omissions excepted. Due to the limitations of photography and the printing process colours shown may not be 100% accurate.  
All equipment should be used in conjunction with clinical judgement and assessments dependent on individual patient morphology.  
Essential nursing care is pivotal in providing the optimum pressure ulcer prevention plan.